

Unlock the full potential of your engraving machine with our training, service, and our test and measure, procedure

Test your workshop - Make these 3 electrical Labels in Just 6 Minutes!

Imagine your team creating three perfectly engraved labels in just six minutes.

With your engraving machine **correctly serviced** and your team members **correctly trained**, your workshop can achieve this level of productivity and precision.

We offer an unbeatable package designed to keep your machine running at its peak and your engraving machine operators productive., The package includes:-

A- Technical Support for Your Operator:

Comprehensive assistance to ensure smooth operation

B- Service Contract:

Regular maintenance to keep your engraving machine performing like new.

C- Easy advanced software

list importing, high productivity software

Packages **A, B & C** **Special Offer \$1,190^{ex p/a}**

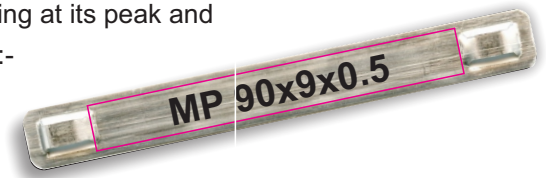
That's just \$23 per week for trouble-free, efficient labelling with minimal delays and downtime. Gain the ability to create professional labels quickly, affordably, and reliably. Take the stress out of Traffolyte and Stainless-steel labelling.

Optional 30% Buy-Back Guarantee

Commit to a 5-year service contract, and enjoy a guaranteed 30% buy-back on new machine sales



Fuse 27



“A” Support

Enhance staff efficiency with our comprehensive support contract.

Empower your team to operate at peak efficiency with our expertly tailored support contract, designed to provide the training, resources, and technical assistance your workshop requires. Here's what we offer:-

1. Proficiency Testing: Ensure your team achieves complete proficiency by producing the three label samples above in just six minutes.

With a trained operator and a well-serviced machine, efficiency is attainable after just one hour of training.

2. One-on-One Remote Training: Delivered via Teams or FaceTime in two training sessions per year (1 hour each). Repeat sessions are available for new operators or refresher training, ensuring every team member remains competent. (Option to record training sessions for your convenience.)

3. “Machine Pre-set” Testing: Correct presets for power, speed, V-power, V-speed, DPI, number of passes, and lens focus, are crucial for a beginner to master the machine. We provide comprehensive guidance to streamline this process.

4. Demonstrate Camera re-position, this will eliminate off-cuts, messy workshop, and half the consumption of Traffolyte

4. Priority IT Support: Correcting technical issues, swiftly and efficiently, through multiple channels: - phone, Teams, FaceTime, email, or remote log-in access.

5. Safety Oversight: A dedicated safety check ensures: prevention of fume inhalation, Awareness around bright laser spots, proper use of safety guards on the guillotine and if applicable, safe use of “Cermark spray” and awareness of a safer chemical free alternative --to include “worksafe compliance” of use of, and location, of nearby Co2 fire extinguisher.

6. Stock Check Reminders: Avoid production delays with timely reminders to reorder stock and ensure the correct part numbers are always in place. With our support contract, your team will gain the confidence and capability to maximize the potential of your engraving machine.



Fast in-house Traffolyte engraving, with our Support and Service Contract

“B” Service

Ensure Optimal Machine Performance with Our Comprehensive Service.

Our tailored Service Contract is designed to keep your engraving machine running efficiently and reliably, minimizing downtime and maximizing productivity. Here's what we offer:

- 1. Remote Guided Services:** One-on-one remote guidance provided annually via Teams or FaceTime. Includes two scheduled services per year, with a service kit conveniently delivered to your workshop.
 - 2. Fume Extraction Maintenance:** Prevent soot accumulation on optics, electronics and rails. Regularly inspect and replace filters as needed. Evaluate and upgrade your extraction system to accommodate increased workloads.
 - 3. Optics Inspection:** Ensure frequent cleaning procedures are followed. Replace optics when necessary for optimal performance, and check alignment
 - 4. Rails Maintenance:** Clean and lubricate rails with dry grease. Check for alignment issues and re-calibrate for precise, “in-square” engraving and cutting
 - 5. Laser Tube Check:** Assess the "Laser Cooling System" for proper operation. Perform refilling or “treated” refilling as required.
 - 6. Machine Safety Checks:** Confirm the machine is properly tagged and tested as per “worksafe compliance”. Ensure UPS systems are connected (guarding against spike/voltage surge), and combustible materials are removed. Operators are to be “worksafe compliant” trained with use of a Co2 fire with extinguisher, with extinguisher nearby .
 - 7. Work space air quality:** Address air quality concerns, ensuring the operator is not exposed to burnt plastic odours. Promote safe handling and storage of Cermark spray and cleaning materials. (to include that the operators area ware that “Cermark spray” has a dangerous chemical label , and that Cermark tape does not have dangerous chemical issues.
 - 8. Clean Shared work Area:** part of or training is to include the importance of starting with a clean organised engraving area, proceed to make you labels, and to l eave the area clean ready for the next team member. also to include requesting for “low stock items”
- This Service Contract provides peace of mind, ensuring your machine operates at peak performance while adhering to safety standards



“C” Advanced easy software

Optimize Bulk Engraving Efficiency with Our High-Productivity Software and Training.

Achieve unparalleled efficiency in bulk engraving with our cutting-edge software and expert training,

Designed to streamline your operations and boost productivity

- 1. Seamless Text Importing:** Effortlessly import text from Excel or TXT files, ensuring smooth and organized workflow.
- 2. Batch Engraving:** Simplify large-scale projects with batch engraving capabilities, such as producing 5 labels across and 5 down in a single operation
- 3. Auto Hole Cutting Setup:** Set to have holes engraved in the traffolyte labels, in a few simple steps
- 4. Jig Making:** Create custom paper jigs effortlessly for bulk engraving tasks, including specialized projects like stainless steel cable markers



Packages **A, B & C** **Special Offer \$1,190 ex p/a**

That's just \$23 per week for trouble-free, efficient labelling with minimal delays and downtime. Gain the ability to create professional labels quickly, affordably, and reliably. Take the stress out of Traffolyte and Stainless-steel labelling.