

Example only  
this is actual font and height  
standand plate is longer at 350mm

# John Smith

15mm / 60pt

**Our part number system will allow easy ordering, with correct product arriving**

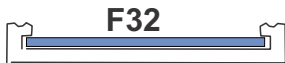
There are three item issues when ordering a door name plate, which we will go through by example (insert and engraving optional)

- Item a- 3 only F32x300/extrusion @ \$20 = \$60 ( this is the quantity/style/length/price )
  - Item b- 3 only F32x300/insert @ \$6 = \$18 ( blank silver insert is default)
  - Item c- 3 only F32x300/engraved @ \$15 = \$45 ( --Aerial 15mm--- eg. Tom Smith/Jill Green/ Tom Brown)
- \$123.00ex + del \$25 + GST \$14.80 = \$162.80 inc**

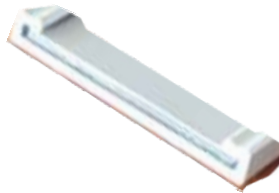
## Laser Friendly

### 1- Door Plates No Caps F32

- when ordering- break into the three items
- a- Extrusion-one line entry for the extrusion
- b- One line entry for the insert
- c- One line entry for the engraving (if required)



32mm insert size



SG-F32x350/Extrusion	@ \$42	3@\$21	10@\$14
SG-F32 x350/Insert	@ \$9	3@\$6	10@\$5
SG-F32x350/Engraved	@ \$15	3@\$12	10@\$10

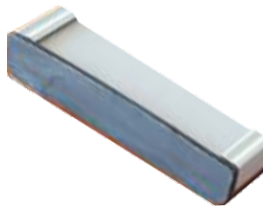
sg-32x1000/extrusion	@ \$51	3@\$29	10@\$15
sg-32x1000/insert Silver	@ \$15	3@\$12	10@\$10

### 2- Door Plates With Caps C37

- when ordering- break into the three items
- a- Extrusion-one line entry for the extrusion
- b- One line entry for the insert
- c- One line entry for the engraving (if required)



C37

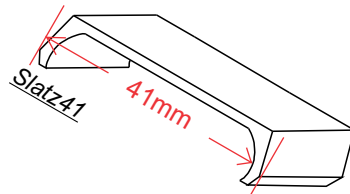


SG-C37x350/Extrusion	@ \$49	3@\$37	10@\$25
SG-C37 Insert x350/	@ \$9	3@\$6	10@\$5
SG-C37 Engraving Name	@ \$15	3@\$12	10@\$10

sg-C37x1000/extrusion	@ \$75	3@\$55	10@\$39
sg-C37-CAP @\$3ea	sg-C37x1000/insert Silver	@ \$15	3@\$12 10@\$10

## Vinyl Only

### 5- Door plates Slatz 41



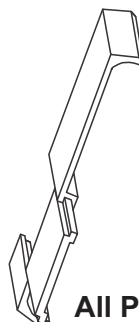
SG-Slatz41/Vx350	@ \$36	3@\$42	10@\$36
------------------	--------	--------	---------

sg-Slatz 41/Vx1000/extrusion	@ \$85	3@\$75	10@\$65
	sg-Slatz-CAP 41@\$3ea		

### 6- Door plates Slatz Slider 42 (supplied without text)



SG-Slatz Slider41x350	@ \$59	3@\$32	10@\$29
-----------------------	--------	--------	---------



### Door plates Slatz Slider 82 (supplied without text)



SG-Slatz Slider 82x350	@ \$73	3@\$56	10@\$47
------------------------	--------	--------	---------